



CSKT TYPE 3 TEAM

INCIDENT COMMANDER: ROB BERNEY

# Niarada, & Mill Pocket Fires

Confederated Salish and Kootenai Tribes

Fire Information: 406-647-0446 | [2023.Niarada@firenet.gov](mailto:2023.Niarada@firenet.gov)



<https://tinyurl.com/NiaradaMillPocketFires>

**August 19, 2023**

---

**Location:** Niarada - 12 miles west of Elmo, MT | Mill Pocket: 3 miles West of Hwy. 28

**Start Date:** Niarada - 7/30/2023 | Mill Pocket – 7/30/2023    **Cause:** Lightning    **Structures Damaged:** 4

**Acres/Containment:** Niarada–20,365 acres, 90% contained | Mill Pocket– 1,869 acres, 95% contained

**Total Personnel:** 323 total    **Engines:** 21    **Aircraft:** 1 + others available as needed    **Hand Crews:** 7

Fire lines built over the past several weeks were tested by intense winds Friday and withstood 30-40 mph gusts. Firefighters were on alert for any blowing embers or new spot fires outside the line while also working to mop up some areas and work on suppression repair in others.

The eastern portion of the Niarada Fire closest to Elmo saw the bulk of the effort as crews worked to cool lingering heat source utilizing some of the 4 miles of hose lays that have been installed in the area. These efforts will be ongoing for the next several days. Structure protection resources – engine crews, sprinkler systems and hose lays – remain in place but will begin drawing down as the weekend forecast calls for reduced wind, increased humidity and cloud cover.

Firefighters working the southern edge of the fire continue to mop up from previous firing operations and have started suppression repair work in Sullivan’s Gulch. Other areas of the fire as well as the Mill Pocket Fire are working on suppression repair and minimal mop up.

## WEATHER AND FIRE BEHAVIOR

With several days of critical fire weather passed, forecasts call for reduced winds and cooler temperatures today. Highs approaching 80 and fair humidity recovery overnight tonight with even lower temperatures and higher humidity Sunday. Significant rain is forecast early next week.

## CLOSURES AND SPECIAL MESSAGES

Near the Niarada Fire, the Lake County Sheriff’s Office has a PRE-EVACUATION WARNING in place for the area that includes Alexander Road, Early Dawn Road, Spring Lane Road, Walking Horse Lane, Windward Heights Road, Wildhorse View, Buffalo Bridge Road, Saddle Drive, Island Butte Lane, Bridle Path, Ten Deuce Way, Cliffview Drive, and Ricketts Road. The remainder of the town of Elmo is in READY status.

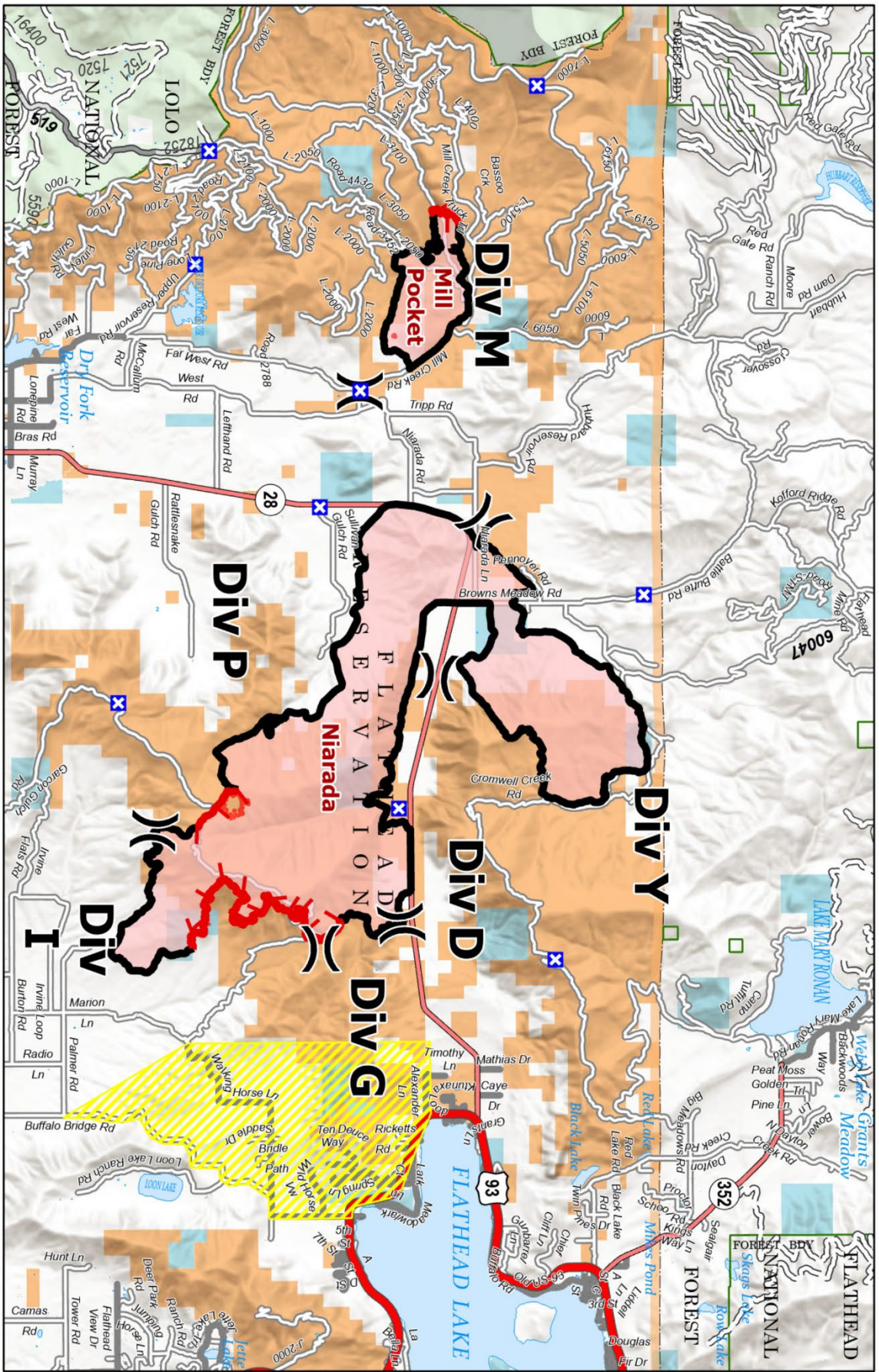
A PRE-EVACUATION WARNING means you may be in your home. However, as there still is a risk from both fires, those in this status should not bring back evacuated livestock until the area is downgraded to READY status.

A temporary flight restriction (TFR) is in effect over the fire area and pilots should obtain up-to-date information about TFRs from the FAA or flight service. Do not fly unmanned aircraft (drones) near the fire areas under any circumstance. Drones are hazardous for pilots, and the firefighters on the ground who rely on aircraft support. Remember, if you fly, we can’t!

## FIRE RESTRICTIONS

Stage 2 fire restrictions are in place across the Flathead Indian Reservation as well as Lake, Flathead and Sanders counties. No campfires are allowed, no smoking outside of vehicles, no operating combustible engines from 1 p.m. to 1 a.m., no operating vehicles off designated roads and trails. Residents and visitors are encouraged to visit [www.MTFireInfo.org](http://www.MTFireInfo.org) for more fire information across Montana.

# Public Information



**Niarada**  
**MT-FHA-000100**    **1,869 acres**

**Mill Pocket**  
**MT-FHA-000101**

- Evacuation Status - READY / SET
- Wildfire Daily Fire Perimeter
- Contained
- Uncontained
- Division Break
- Road Closure
- American Indian Lands
- Forest Service Land
- Bureau of Land Management Lands
- State Lands

